

# EXPLORE *St George Region*

BOLLON DIRRANBANDI HEBEL MUNGINDI NINDIGULLY ST GEORGE THALLON  
QUEENSLAND'S SOUTHERN OUTBACK



# Welcome to St George Region



Let the adventure begin in the St George Region, where the Outback meets country charm. Experience the relaxed local lifestyle, history, rivers, national parks, wildlife, and unique night skies in this Outback oasis.



We acknowledge the traditional custodians of the land on which we live, work and play. We pay our respects to elders past, present and emerging.



*Balonne means 'pelican' or 'water' or 'running stream' in the local Mandandanji language*



Welcome to

# Balonne Shire!

There is no such thing as a stranger in “Our Place” – just people we are yet to meet. Whether you want to meander leisurely or experience all we have to offer – from a rich agricultural heritage, some of the original tracks of the Cobb & Co coaches, the famous painted silos, unique watering holes and even a massive wombat – we are more than happy for you to make our place your place for as long as you like.

St George, Dirranbandi, Bollon, Hebel, Nindigully, Thallon and Mungindi make up the St George Region. Uniquely, all our communities are situated by a river so if fishing appeals to you there will never be a better place to stop and drop a line.

Our St George Region Explore Centre, located in St George, is a must stop, first point of call. Here, our friendly and well-informed staff will ensure that you get the best out of your stay with us.

Samantha O’Toole, Mayor



## Contents

Getting Here	04
Itineraries	06
10 Things to See & Do for Free	08
Regional Arts	09
Family Fun Ideas	10
Pet Friendly Places	11
National Parks	12
Outdoor Adventures	14
Events	16
Towns of our Region	21



# Getting to the Region

How you arrive at the St George Region is a matter of choice.

## Air

Take to the skies with Regional Express (Rex). Rex offers flights from St George to Toowoomba and Brisbane twice a week on Wednesday and Sunday (flight schedules subject to change).

For bookings and more information visit [rex.com.au](http://rex.com.au) or call 13 17 13.

## Bus Services

Why not kick back and let Murrays Coaches do the driving? With frequent services to the St George Region, snag a window seat and relax.

For booking and details, check out [murrays.com.au](http://murrays.com.au) or call 13 22 51.

## Road

It's time to hit the open road and explore the St George Region. Follow either the Adventure Way or Great Inland Way.

- » Toowoomba to St George: 367km
- » Goondiwindi to St George: 200km
- » Roma to St George: 195km
- » Lightning Ridge to St George: 229km

For up-to-date road conditions and assistance, contact:

- » St George Region Explore Centre
- » Visit the Emergency Dashboard: [emergency.balonne.qld.gov.au](http://emergency.balonne.qld.gov.au)
- » Queensland Road Conditions 13 19 40 | [qldtraffic.qld.gov.au](http://qldtraffic.qld.gov.au)
- » New South Wales Traffic Road reports 13 17 00 | [livetraffic.com](http://livetraffic.com)
- » RACQ Roadside Assistance 13 11 11

## EV Charge

EV Charging Stations can be found behind the St George Library and in Henry Street.

## Accessibility

The region is inclusive, offering accessible parking, roads, and accommodation options. Several attractions feature wheelchair-friendly access and bathrooms.

For more details, contact the St George Region Explore Centre.

## St George Region Explore Centre

Visit the St George Region Explore Centre, the friendly staff are full of local hot tips, from the best fishing spots to tour information, browse locally made gifts, or get something to remember your trip by!

If you're travelling with a caravan, there's plenty of parking available at the back of the building. Additionally, you can replenish your water supply with the town's artesian water here.

114 St George's Terrace, St George  
P: 07 4620 8877  
M - F: 8.30am - 4.30pm.  
**Weekends/Public Holidays:** 9am - 1pm.  
Hours may vary out of season





# Sustainable Tips

## Waste Reduction

Recycle at the Explore Centre or Containers for Change depot in St George



## Sustainable Souvenirs

Choose reusable items or local produce like garlic



## Eco-Friendly Travel

Borrow bikes for free to explore St George

10 DAYS



# South West Loop



Sample the best of the South West on this 10 day itinerary featuring a selection of must-dos at each stop. Why not stay a little longer and discover even more?

**BRISBANE > ROMA > CHARLEVILLE > QUILPIE > EROMANGA  
THARGOMINDAH > EULO > CUNNAMULLA > ST GEORGE > BRISBANE**



# More Itineraries

Explore the St George Region with our three curated self-drive tours. From national parks to riverside walks, bird watching to cultural tours, there's something for the whole family.



## Outback Oasis

3 DAYS | 158KM

St George > Nindigully > Thallon > St George

Discover the natural beauty and rich heritage of the St George Region as you stroll scenic riverbanks, spot vibrant birdlife, and uncover stories of its pioneering spirit. Experience an Outback oasis like no other.



## Adventure Way Loop

4 DAYS | 250KM

St George > Nindigully > Thallon > Dirranbandi > Bollon

Explore the St George Region's iconic watering holes and secret fishing spots before uncovering its rural heritage. End your journey in Bollon, where bush tales meet the open roads of the Adventure Way.

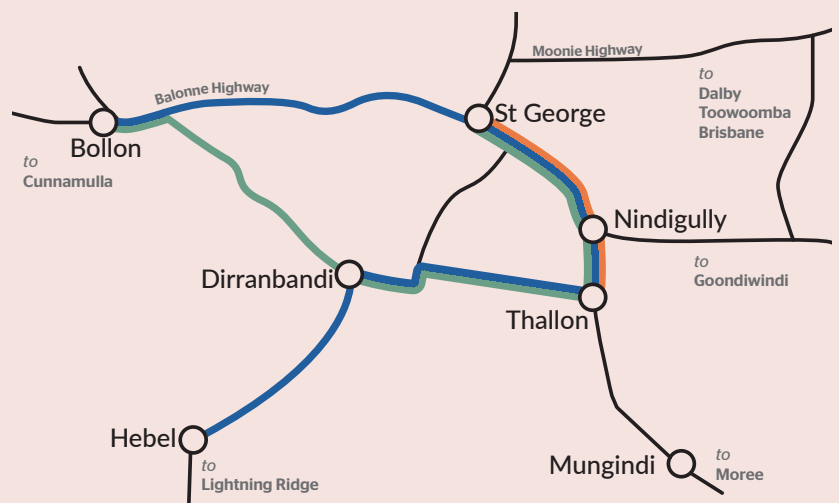


## Produce, Parks & Pubs

5 DAYS | 325km

Hebel > Dirranbandi > Thallon > St George > Bollon

Journey through serene national parks, connect with local producers, and unwind in character-filled historic pubs. Each stop reveals the unique culture and beauty of the region.



For more detailed itineraries, visit [stgeorgeregion.com.au](http://stgeorgeregion.com.au) or head to the St George Region Explore Centre to grab a printed copy.

1. COME FACE TO FACE WITH WILLIAM THE WOMBAT IN THALLON



2. STROLL ALONG WALLAM CREEK IN BOLLON



3. DROP A LINE IN THE MOONIE RIVER AT NINDIGULLY



4. FREE BIKE HIRE FROM ST GEORGE REGION EXPLORE CENTRE



# 10 Things to See & Do for Free!

Explore the best of the St George Region without spending a cent! From exploring nature to rich history and dynamic art, there's something for everyone to enjoy.

5. VIEW THE MURALS IN HEBEL



6. EXPLORE THE RAIL & RIVER PRECINCT IN DIRRANBANDI



7. DISCOVER THE ORIGINAL ONE TON POST SURVEYOR'S PEG IN MUNGINGINDI



8. WANDER THROUGH THE BUSH TUCKER GARDEN IN ST GEORGE



9. ENJOY SOME NATURE AND WATCH THE NATIVE WILDLIFE



10. COMPLIMENTARY TASTINGS AT RIVERSANDS WINES, ST GEORGE





# Regional Arts



## St George Mural Trail

Explore St George's colourful art murals that reflect the local community and culture. These must-see murals are easily discoverable, offering an unforgettable experience for both locals and visitors. Each mural tells a unique story, showcasing the area's history and creativity.

Immerse yourself in a tapestry of vibrant colours and captivating stories throughout the St George Region's art scene!

From towering silos adorned with stunning murals to rustic sculptures in all shapes and sizes, our region is a canvas bursting with creativity. Each piece of art tells a unique tale of our history, culture, and community. Explore the trails and discover the hidden beauty and legends that make the St George Region truly unforgettable.



## Mungindi Sculpture Trail

An open-air art gallery spanning the QLD/NSW border, featuring ten sculptures by local artist Tony 'Nicko' McMillan. Donated by his family after his death in 2016, the trail was funded by the Murray-Darling Basin Economic Development Program and includes interpretative signage and QR code-accessible videos that explain the sculptures' stories.

## Explore more

- Paperback Hero Boomerangs, Nindigully
- Nindigully Mural
- Dirranbandi Art/Mural Trail
- Rail & River Precinct Sculptures, Dirranbandi
- John Murray Artworks, Hebel
- Simon White Murals, various locations
- Nullawokka First Nations Art Gallery, Bollon
- William the Hairy Nosed Wombat, Thallon
- The Unique Egg, St George
- The Harmony Centre, St George



## Thallon Watering Hole Heritage Art Trail

This itinerary showcases Thallon's dynamic public art, including murals and sculptures that reflect the local community, culture, and history. Visit iconic sites like the painted silos and other hidden gems, experiencing art that embodies the essence of the Outback. Ideal for art lovers, photographers, and explorers!



You can explore the art trails in any town, starting wherever suits you best. Drop into the St George Region Explore Centre for local trail guides or scan the QR codes for more information.

📍 Splash Park, St George

## Splash around

at St George Aquatic Centre's Pool, Thermal Pool & Splash Park, the Thermal Pool in Mungindi and the Pool in Dirranbandi



## Riverbank walkways

Walk, run, ride or skate along one of the river walkways in St George, Bollon, Dirranbandi, Nindigully and Mungindi. Plus join Park Run in St George.



## Playgrounds

at multiple locations throughout the region

## Skate parks

located in Bollon, Dirranbandi, St George and Mungindi



## Boat / Canoe ramps

St George, Dirranbandi and Mungindi

# Family Fun Ideas

## Fish in one of the waterways

Spoilt for choice, reel in your dinner



try one of our many self-guided trails

## Enjoy a picnic

at one of the many picnic tables locations right across the region



Follow one of the many mural or artwork trails



## Visit one of our local libraries

St George, Dirranbandi, Mungindi Thallon, Hebel and Bollon





# Pet Friendly

## Stop and shop

at the St George Region Explore Centre, where pets are welcome inside

## Relax with your pooch



at Riversands Wines



## Freshen up your pup

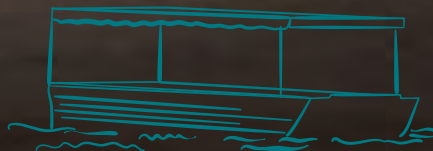
at the Kamarooka Caravan Park's self-service dog wash



Travelling with your four-legged companions has never been easier in the St George Region! With plenty of pet-friendly activities and facilities, you and your pet can enjoy a memorable adventure together. Here are our top tips:

## Stay in comfort

most caravan parks welcome pets (check terms and conditions)



## Take in the scenery

on one of the many beautiful paved riverwalks in St George, Bollon, Nindigully, Dirranbandi and Mungindi

## Need a break?

St George Veterinary Practice offer doggy daycare (no booking required, contact for more info)



## Grab a coffee

at one of the pet-friendly cafes with your furry companion.

## Enjoy the breeze

on a Sandytown River Cruise (check pet-friendly options)

# National Parks

*Our untouched national parks are dry weather access only, and for those who are fully self-contained and well prepared as there are no services available at these locations.*

*National Park campsites must be pre-booked online through [qpws.usedirect.com/QPWS](http://qpws.usedirect.com/QPWS) or by calling 13 74 68 (13 QGOV).*

## **Thrushton National Park**

Thrushton National Park, 40 km northeast of Bollon, offers birdwatching, wildflowers, and wildlife such as emus and echidnas. Explore bushland without designated tracks, visit Thrushton Homestead ruins, and Old Shearers Shed, a testament to the area's previous life as a sheep property. Since then, the Park has been untouched, allowing nature to take over.

**Getting to Thrushton National Park:** Thrushton National Park is accessible in dry weather only via dirt roads. From St George, drive 51 km west along the Balonne Highway towards Bollon. When you reach the Boolba tennis courts, take the next right and follow the road for 36.3 km (eventually becomes Cypress Tank Road) until you reach the Rutherglen Road turnoff. Follow Rutherglen Road for 14.5 km until you reach the eastern corner of the park.

## **Culgoa Floodplain National Park**

Culgoa Floodplain National Park, located 50 km southwest of Hebel on the Queensland border, is a 42,895-hectare park. Untouched, floodplain country with ancient stone tools and cooking sites scattered throughout, a testament to the rich First Nations culture that has thrived here for centuries. Plus, remnants of the former Byra Station.

**Getting to Culgoa Floodplain:** The park is accessible in dry weather only via dirt roads. From Hebel, travel 45 km south to Goodooga along a sealed road. From Goodooga, turn right onto Brenda Road before taking the left fork after the cattle grid. Follow the 'Byra 7 km' sign until you have reached the park's eastern boundary. Please leave any gates you pass through as you find them. Four-wheel drives are essential.



## Birdwatching

With over 240 recorded bird species within the St George Region, and an endless number of locations, our region is a bird nerd's dream. To help find our feathery friends, get your free copy of the *Birds of the Balonne* brochure from St George Region Explore Centre or download your copy at [stgeorgeregion.com.au](http://stgeorgeregion.com.au)

If you prefer a more guided experience into the bird world, join a cruise down the Balonne River in St George on a birdwatching cruise with Sandytown River Cruises, 0400 219 379 or [sandytownrivercruises.com](http://sandytownrivercruises.com) with your local guide to help you spot them.



## Stargazing

With so many locations to discover, here's our top star gazing spots in the region! Don't forget to tag us in your Insta shots.

1. McGeever Campgrounds, Thallon
2. Rouges Gallery, Thallon
3. Beardmore Dam, St George
4. Buckinbah Weir, St George
5. Nindigully Pub
6. Hebel Pub and Caravan Park
7. Dirranbandi
8. Bollon
9. Mungindi
10. National Parks – dry weather only.



# Outdoor Adventures

Pitch your tent at one of our free camping locations

## McGeever Recreation Grounds:

- 📍 About 75 km southeast of St George in the small town of Thallon.
- ✳️ There are free camping areas with camp kitchen, toilets, showers, low-cost powered sites, a dump point, and potable water. The highlight is the nearby Grain Silos, which have impressive murals that attract photographers and art lovers.

## Nindigully Tourist and Visitor Area:

- 📍 Roughly 45 km south of St George, find free camping by the Moonie River.
- ✳️ There are no powered sites, but free camping is allowed on the riverbank. Toilets and showers are available at the pub for a small donation.

## Balonne Minor Free Camp:

- 📍 90 km southwest of St George, and 3km out of Dirranbandi.
- ✳️ The Dirranbandi Balonne Minor site offers free camping with no facilities or power available.

## Barwon River Campsite:

- 📍 118km southeast of St George on the north bank of the Barwon River in Mungindi.
- ✳️ This campground is equipped with toilets, showers, picnic area, BBQ, boat ramp and potable water.

## Warroo Bridge Campsite:

- 📍 52km north of St George towards Surat turn off when you see the sign for "Wanganui/Warroo Bridge." Then, continue along the sealed road for another 9 km to reach Warroo Bridge.
- ✳️ There are no amenities available at this site. Check the weather before accessing this site.

## Wallam Creek Campsite:

- 📍 Located approximately 113 km from St George, you'll find the picturesque Wallam Creek in the town of Bollon.
- ✳️ While there are no powered sites offered, amenities are conveniently accessible just a short distance from the campsites located in the town centre.

No bookings required, first come first serve basis

# Make a splash

With each of our seven towns located along a waterway, you'll find plenty of ways to enjoy a refreshing escape from the Outback heat. Here's how you can make the most of our beautiful rivers, dams, and creeks:



## Bring your watercraft

Canoes, jet skis, boats, or whatever floats your adventure! There's endless fun for water enthusiasts here.



## Boat ramps ready

If you're ready to get on the water, we've got you covered. Convenient boat ramps await in St George, Dirranbandi, and Mungindi for easy access to our waterways.



## Explore local waterways

Discover the serene beauty of Beardmore Dam or cast a line in the famous Balonne River. Other must-see spots include Buckinbah Weir, Balonne Minor River, Barwon River, Moonie River, and Wallam Creek.

 Balonne River, St George


# Fishing

Explore the ultimate inland fishing experience with the St George Region Fishing Loop, proudly known as the Inland Fishing Capital of Queensland.

Reel in impressive catches like massive Murray Cod, Yellowbelly, and Blue Claw Yabby as you explore this fisherman's paradise. Whether you're a seasoned pro or a casual caster, the St George Region promises an unforgettable fishing adventure—so pack your gear and get ready to make some incredible memories on the water!

Download your guide to the loop



 Balonne Minor, Dirranbandi





# Events

The St George Region comes alive year-round with vibrant events celebrating our rich culture, history, and community spirit. Whether you're here for family-friendly fun, live entertainment, or a taste of country hospitality, our events showcase the very best of the region.

## January

Long Table in the Vines, St George

## March

Grazing at the Watering Hole (Biennial), Thallon

Battle on the Balonne Backwards, St George



## April

Dirranbandi Show and Campdraft

Easter in the Vines, St George

Easter Fishing Competition, Dirranbandi

## May

St George Show  
Hebel Speed Shears



## June

Yellowbelly Country Music Festival, St George

## July

Polocrosse, Dirranbandi

Mungindi Races

St George Races

Hebel Gymkhana



## August

Mungindi Show

Hebel Campdraft

St George Cutting Horse Futurity

Thallon Truck Pull (Biennial)

## September

Bollon Campdraft and Rodeo

Campdraft, Nindigully

Campdraft, St George

## October

Dragon Country Sandgreen, St George

Fishing Competition, St George

## November

Nindigully Pig Races



Confirmed dates and more events can be found on our website





# VISIT RIVERSANDS WINES

## Cellar Door & Café

Visit our cellar for a free personalised tasting of our boutique wines all grown at Queensland's most western winery on the banks of the Balonne River at St George. Enjoy smoko or lunch in our expansive garden with a glass of your Riversands favourite! On our shady green lawns you will find lots of space for kids to play. Pets are welcome in the garden on a leash.

- ◆ Savour the flavour of our award winning whites, reds, sparkling and famous fortified wines, plus stock up on your favourites to take home
- ◆ Choose a smoko treat from our café menu (scones, cream & grape jam, mudcake, coffee & drinks to suit) or a savoury lunch (quiche, frittata, cheese platter, ploughman's lunch, toasty)
- ◆ Browse our product range (grape jam, chutney & relish, fortified chocolates, honey, garlic, jerky & gifts)
- ◆ Book in a group function small or large

**FIND US:** Only 5 minutes from the town centre. Travel west along Victoria Street towards the Jack Taylor Weir. Turn left at our sign into Bowen Street, then right at the next sign into Whytes Road. Follow the signs for 2kms until you see our sign post near the date palms. Access is all-weather with a U-shaped circuit and parking for large caravans and motorhomes.



## Long Table DOWN THE VINES

Dine under the stars down the vines on the Australia Day weekend for our annual Long Table event. Enjoy a stunning feast prepared by Mitchell chef Sue Alm as we showcase our regional food paired with award-winning Riversands Wines.

Celebrate with live music by popular entertainer Cathy Drummond, guest speakers and local producers plus a grape stomping challenge.

FIND DETAILS AT:

[riversandswines.com/events](http://riversandswines.com/events)

## RIVERSANDS Easter in the Vines

Join us for a fun weekend of family entertainment, dancing and live music on Easter Saturday and Sunday. Easter in the Vines is our signature event which has been running over 25 years. Set in the lush Riversands gardens, enjoy your favourite wine while socialising with family and friends. Pre-order a BBQ pack to cook up a sizzling beef fillet and snags. Kids can enjoy a jumping castle, Easter egg hunt, colouring competition, and hopscotch. We offer a full bar, wine tastings, and delicious café food. Best of all, entry is FREE, and a courtesy bus runs to and from town!

FIND DETAILS AT:

[riversandswines.com/events](http://riversandswines.com/events)



# Riversands Wines

OPEN 7 DAYS FOR WINE TASTING & CAFÉ  
Monday to Saturday 9am – 5pm, Sunday 9am – 4pm  
(café closing 2 pm Sundays November to March)  
66 Whytes Road, St George Q 4487 | P: 07 4625 3643

[facebook.com/riversandswines](https://facebook.com/riversandswines)

[instagram.com/riversandswinery](https://instagram.com/riversandswinery)

[tripadvisor.com.au/riversandswinery](https://tripadvisor.com.au/riversandswinery)

[sales@riversandswines.com](mailto:sales@riversandswines.com)



BOOK ONLINE AT [RIVERSANDSWINES.COM](http://RIVERSANDSWINES.COM)

8 Anchorage Homestead (14km) ↗



# EXPLORE St George

WAGOO RD (GOLF COURSE 3KM)  
←

Bollon - 112km  
Mitchell - 210km  
Cunnamulla - 291km



BALONNE RIVER

WHYENBAH RD  
BALONNE HWY

Andrew Nixon Bridge  
(Jack Taylor Weir)  
Major Mitchell Monument  
Cavanough Park

ALBERT ST  
ALBERT ST  
HERBERT ST  
SANDY LANDS RD  
MITCHELL ST  
WHYTES RD  
BOWEN ST  
MARGARET ST  
ALFRED ST  
HUTT ST  
LOGAN LN  
ROBERT ST  
MURCHISON ST  
HILL ST  
VICTORIA STREET  
HUME ST  
BARLEE ST  
WERRIBONE ST  
MARIE ST  
WILSON AV  
TAYLOR ST  
ANDERSON LN  
GREY STREET  
MUNRO ST  
WATHERALL ST  
CUTLER CT  
ARTHUR ST  
BALONNE ST  
BEARDMORE PL  
HENRY ST  
KUNGE LN  
ALFRED ST  
SCOTT ST  
KENNY LN

Riversands Vineyards (3km)



St George Cemetery & Memorial to the Amoy Shepherds

Kapunda Riverfront Tourist Park – 9km  
**Beardmore Dam turnoff**  
 (Thungaby Rd) - 14km  
**Surat - 117km**  
**Roma 194km**  
**Dalby 302km**

**Nindigully - 45km**  
**Thallon - 75km**  
**Dirranbandi - 97km**  
**Mungindi - 118km**  
**Hebel - 162km**  
**Goondiwindi - 203km**  
**Lightning Ridge - 238km**  
**Moree - 240km**

**ST GEORGE REGION  
 EXPLORE CENTRE**

114 St George's Terrace, St George QLD 4487  
 P: 07 4620 8877 E: vic@balonne.qld.gov.au

For further information visit our website:  
**stgeorgeregion.com.au**  
 or scan the QR Code.

f @StGeorgeRegion



**ATTRACTIONS**

- 1 Riversands Wines
- 2 Sandytown River Cruises
- 3 The Unique Egg
- 4 Bush Tucker Garden
- 5 Harmony Centre
- 6 Murray Cod Fish Sculpture
- 7 Flood Height Marker
- 8 Anchorage Homestead
- 9 Pilot & War Memorial
- 10 Swimming/Thermal Springs

**ACCOMMODATION**

- 1 Jacaranda Country Motel
- 2 Merino Motor Inn
- 3 Riverland Motor Inn
- 4 Balonne River Motor Inn
- 5 St George Hotel Motel
- 6 Cobb & Co Hotel
- 7 Riverview Hotel
- 8 Australian Hotel Motel
- 9 River Gum Tourist Park
- 10 Kamarooka Tourist Park
- 11 Pelican Rest Tourist Park
- 12 Kapunda Riverfront Tourist Park
- 13 Andarr B&B
- 14 Blenheim Backpackers Budget Accommodation

**FACILITIES AND SERVICES**

- 1 Explore Centre
- 2 Canoe Launch
- 3 Shopping Centre
- 4 Public Toilets
- 5 Free Electric BBQ
- 6 Laundromat
- 7 Cycling/Walking Track
- 8 Memorial/Monument
- 9 Amphitheatre
- 10 Boat Ramp
- 11 Church
- 12 Mitre 10 store
- 13 Aged Care Facility
- 14 Tennis Court
- 15 Lawn Bowls
- 16 Dog Wash
- 17 Health Services
- 18 Fuel Station
- 19 Police Station
- 20 Ambulance
- 21 Fire Brigade
- 22 Post Office
- 23 Library
- 24 Creative Arts
- 25 Education Centres
- 26 St George Men's Shed
- 27 Dump Point
- 28 Golf Club
- 29 Netball Court
- 30 Bottle Exchange
- 31 Skate Park
- 32 EV Charging Station

To Racecourse



JOHNSTON RD

## ST GEORGE

# Cotton Vineyard Tour

Hear from local farmers about irrigated farming on a combined cotton farm and vineyard tour. The tour offers a fascinating insight into the remarkable natural fibre of cotton and Queensland's most western winery.

- ◆ See where we grow your irrigated food and fibre
- ◆ Learn about growing, irrigating, harvesting and marketing cotton
- ◆ Tour Riversands Wines and learn about growing table and wine grapes
- ◆ Enjoy a tasting of Riversands wines and a delicious 3 course lunch



### ALL TOUR BOOKINGS

contact **St George Region Explore Centre** on 07 4620 8877 or [vic@balonne.qld.gov.au](mailto:vic@balonne.qld.gov.au) or **Riversands Vineyards** on 07 4625 3643.

You can also book & pay directly on-line. Alternatively you can pay the bus driver in cash or pay on completion of the tour by credit card or cash.

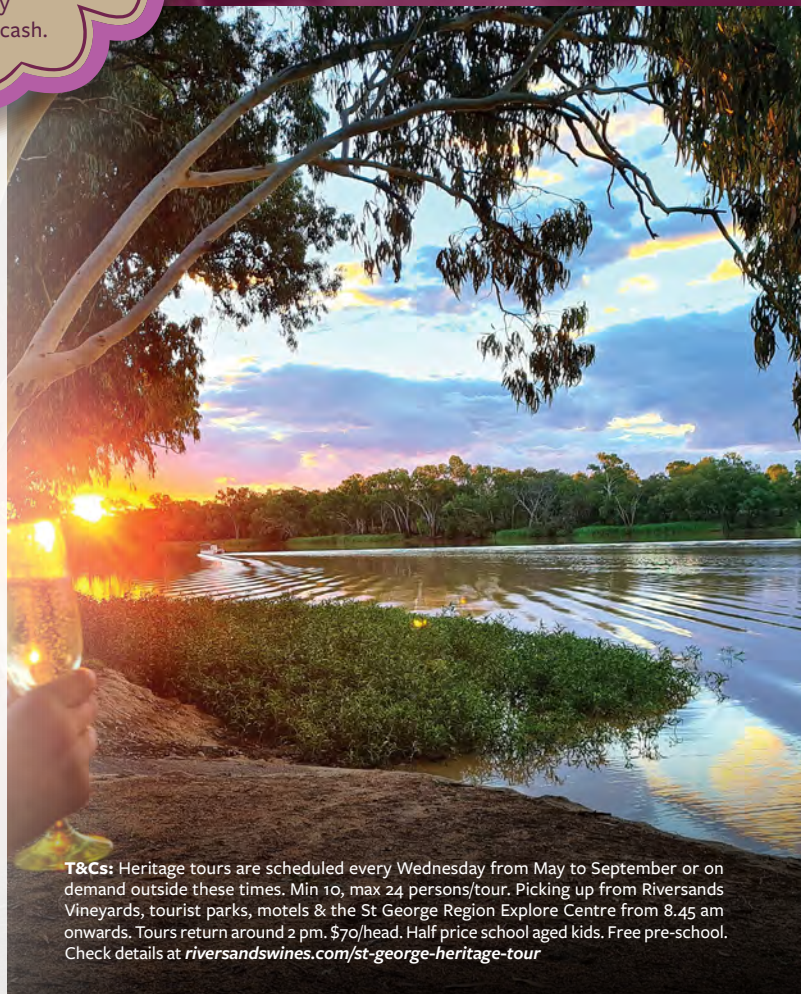
**T&Cs:** \$75/head. Half price for school age kids. Pre-schoolers free. We offer the tours on Thursday's in April, Tuesday's & Thursday's in May – September, or pending numbers outside these times. Minimum 10, maximum 24. Picking up from Riversands Vineyards, tourist parks, motels & the St George Region Explore Centre from 8.45 am onwards. Tours return around 2 pm. Book April to mid-May if you wish to see cotton picking. Check details at [riversandswines.com/cotton-vineyard-farm-tours-1](http://riversandswines.com/cotton-vineyard-farm-tours-1)

## ST GEORGE

# Heritage Tour

Hear about our rich heritage on this illuminating 4 hour guided tour where we profile the town's history, flood stories, the Harmony Centre and the story of horticulture and grape growing in St George.

- ◆ Learn about the stories and legends of St George on a town tour
- ◆ Visit the new Harmony Centre to learn about indigenous art, music and culture
- ◆ View the mighty Beardmore Dam, discover its history and enjoy scones, cream and grape jam for smoko
- ◆ Visit Queensland's most western winery, Riversands Wines to learn about the history of horticulture and grape production in the district
- ◆ Hear the stories behind the labels on their whites, reds, sparkling and fortified wines along with a full tasting and 3 course lunch



**T&Cs:** Heritage tours are scheduled every Wednesday from May to September or on demand outside these times. Min 10, max 24 persons/tour. Picking up from Riversands Vineyards, tourist parks, motels & the St George Region Explore Centre from 8.45 am onwards. Tours return around 2 pm. \$70/head. Half price school aged kids. Free pre-school. Check details at [riversandswines.com/st-george-heritage-tour](http://riversandswines.com/st-george-heritage-tour)



## Riversands Wines

OPEN 7 DAYS FOR WINE TASTING & CAFÉ  
Monday to Saturday 9am – 5pm, Sunday 9am – 4pm  
(café closing 2 pm Sundays November to March)  
66 Whytes Road, St George Q 4487 | P: 07 4625 3643

[facebook.com/riversandswines](https://facebook.com/riversandswines)   
[instagram.com/riversandswinery](https://instagram.com/riversandswinery)   
[tripadvisor.com.au/riversandswinery](https://tripadvisor.com.au/riversandswinery)   
[sales@riversandswines.com](mailto:sales@riversandswines.com) 

BOOK ONLINE AT [RIVERSANDSWINES.COM](http://RIVERSANDSWINES.COM)

# EXPLORE St George



*Fun Fact:*

The Jack Taylor Weir - Andrew Nixon Bridge was constructed from 1948-52.

Queensland's Inland Fishing Capital, St George, is situated by the Balonne River, where our community life revolves around the waterways. The town is well known for the beautiful blooms and well-manicured streetscapes, giving it the nickname 'the Outback Oasis'.

Before you begin exploring, stop by the **St George Region Explore Centre** for all the local information you need. You can even **hire a bike** and set out on two wheels to fully immerse yourself in the beauty and history of this unique Outback town.

Explore the town by walking or riding along the **Riverbank Walkway**, a 2.5 km path from the Jack Taylor Weir. Enjoy birdwatching, see historical landmarks like **Sir Major Thomas Mitchell's Crossing Cairn**, the **Fighter Pilot War Memorial**, and the **War Memorial Wall** honouring those who served in conflicts.

See St George from a new perspective with **Sandytown River Cruises**. Led by local captain Brett, you will gain insights into the river's cultural significance, flora and fauna, and even some history of the town.

Visit **The Unique Egg** and admire emu eggs transformed into stunning hand-carved illuminated art pieces. Crafted by local Steve Margaritis for over 40 years, these eggs are displayed in-store and have been showcased at World Expos and even gifted to the White House. Steve has passed down his carving skills to his daughter, who has now taken over the craft, continuing the tradition and even creating pieces on commission.

Wine lovers shouldn't miss **Riversands Wines**, Queensland's westernmost winery. Enjoy vineyard tours and tastings of their award-winning wines, including delicious fortified muscats and ports. Be sure to sample their grape jams and chutneys. All make perfect souvenirs.

From April to October, experience a **Cotton Farm and Vineyard Tour**. Discover the agricultural heart of the region with a tour of a working cotton farm and vineyard, followed by a delightful wine tasting and lunch at Riversands.

Unwind at the **Balonne Artesian Thermal Hot Springs**, where soothing water from the Great Artesian Basin offers the ultimate relaxation. With water temperatures between 34-38 degrees, you can soak your cares away. Check the operating hours.

Celebrate the rich culture of our region's First Nations peoples - Kamilaroi, Gamilaraay, Gunggari, Mandandanji, Kooma, Bigambul, and Euahlayi. Visit the **Harmony Centre**, a new gallery featuring stunning local artwork for sale and check out the recording studio dedicated to preserving cultural heritage.

Walk through the local **St George Bush Tucker Garden** and witness some local history like scar trees or learn more about our native edible species, quandong trees and supplejack to name a few plants located in the garden.



3,179 people call  
St George home



# EXPLORE Dirranbandi



669 people call  
Dirranbandi home

Just southwest of St George along the Inland Way, lies the welcoming town of Dirranbandi, where warm hospitality, rich agriculture, and fascinating history await. Fondly called 'Dirran' by locals, this charming town is home to Australia's largest cotton farm — Cubbie Station. With **Dirranbandi Outback Tours**, you can experience the scale and significance of this massive operation firsthand. Don't miss this unique opportunity! Book your tour today by contacting Dirranbandi Caravan Park on 0447 555 685.

Step back in time at the **Rail & River Precinct**, where you'll explore Dirranbandi's railway history. Visit **Railway Park** to see the original waiting room, parcels office, and the former Station Master's residence, now transformed into the **Dirranbandi Rural Transaction Centre**. Here, you'll also find tributes to key local figures like Des Stevenson, a pioneer of the cotton industry, and a statue of Aboriginal stockman **Tom Dancey**, who made history by winning the prestigious Stawell Gift foot race in 1910.

Dirranbandi is also the hometown of fictional character Les Norton, the rugged protagonist in Robert G. Barrett's novels, adding a layer of literary charm to this Outback town.

Make the **Dirranbandi Rural Transaction Centre (RTC)** your first stop when exploring the town. A hub of local knowledge and history, the RTC offers fascinating insights into the area's past, as well as a range of unique souvenirs to take home. Whether you're after tourist information, friendly advice, or a deeper connection to the Dirranbandi community, the RTC has everything you need to enhance your visit.

Be sure to check out the town's stunning **murals** painted by Simon White, which capture the spirit and heritage of Dirranbandi.

Dirranbandi is celebrated in Slim Dusty's iconic song *Cunnamulla Fella*, which fondly references the 'Dirranbandi Dandy,' cementing the town's place in Australian country music history.

Don't leave without a visit to the beloved **Dirranbandi Bakery**. Run by Natalia, a Russian-born baker, this gem offers a mouthwatering selection of fresh pies, traditional bakery treats, and authentic Russian pastries. It's the perfect spot for a delicious bite during your visit.

## Fun Fact:

In May 1913 the Southwestern railway was officially opened in Dirranbandi. It serviced the 413 km mail run from Warwick and saw Australia's last mail train in 1993.





247 people  
call Bollon home

EXPLORE

# Bollon

Bollon, a peaceful town nestled on the banks of the Wallam Creek, offers an authentic Outback experience. This friendly community welcomes you to stay a few days, relax and connect with nature and culture in a unique setting.

Immerse yourself in the rich traditions of the area's Kooma/Guwamu First Nations people by visiting **Nullawokka First Nations Gallery & Tours**. Cultural walks and 4WD tours led by a traditional custodian provide a fascinating glimpse into Bollon's Indigenous heritage. These personal tours provide a deeper appreciation of the first inhabitants and their connection to this land and offer a unique opportunity to view ancient sites and sample bush tucker. If time is short call into Nullawokka's pink gallery in Bollon's charming main street to browse a range of authentic First Nations art, bush foods and gift lines.

## Fun Fact:

It is believed the town's name originated from the Indigenous word "Bolion" meaning "stone tomahawk or axe" and was adapted later to the word Bollon.



The **Bollon Heritage Centre** showcases stories of early pioneers and settlers who shaped the region, including the town's enduring connection to the sheep and shearing industry. Uncover tales of everyday life back in the early days, when the mail came via Cobb & Co coach once a week and the town boasted three hotels and one taxi! The friendly volunteers who open the Centre are always happy to chat and reminisce about Bollon and its quirky inhabitants.

A peaceful stroll along the scenic 1.2 km walkway that meanders beside **Wallam Creek** will lead you to the town's picturesque free caravan and camping area. Toilets and free hot showers are located on this path that is also lined with beautiful Dreamtime artwork and is illuminated by solar lights in the evening. **Walter Austin Park** provides a shady spot, on warmer days to sit and watch the abundant birdlife or more energetic visitors kayaking on the creek.



# EXPLORE



## Fun Fact:

Vic Chapman was the first Aboriginal person to become a school principal at the Hebel State School.

# Hebel

Perched on the edge of the Queensland border, the town of Hebel is home to tales of the Ned Kelly gang and Cobb & Co. Although Hebel is one of our smallest towns by population, it's certainly mighty! Don't let this town fool you, with many visitors wanting to extend their stays due to the charm of the locals and great atmosphere!

The historic **Hebel Hotel** features unique artwork by John Murray and a rich history dating back to the 1890s. Visitors can enjoy the rustic charm of the **Hebel General Store and Caravan Park**, which offers that classic country hospitality and a memorable dining experience you can only expect from a place like Hebel.

Explore more of Hebel's history by visiting the **Historical Circle** which narrates the town's history through illustrated signs on tall timber posts.

Hebel itself might have become a ghost town if not for the determination of local grazier Frank Deshon, who stepped in and bought much of the town when it was on the brink of closure. Thanks to his efforts, Hebel's story continues, with its unique history and country charm now delighting travellers from far and wide. This remarkable act of community spirit has ensured that Hebel remains a vibrant stop on any journey through the region.



Though Hebel shares a postcode with Dirranbandi, it has a population of just 62 people







The name Nindigully is said to be a combination of an Indigenous word 'nindi' meaning 'small' and the English word 'gully'.



## EXPLORE

# Nindigully

Located where the Carnarvon and Barwon Highways intersect, you'll find one of Queensland's most cherished cultural landmarks – Nindigully, or 'The Gully,' as the locals affectionately call it. Home to one of Queensland's longest continually licensed pubs, the iconic **Nindigully Pub** has stood proudly on the banks of the Moonie River since 1864, offering visitors a taste of authentic Outback history and charm.

The pub has made its own silver screen appearance having featured in Hugh Jackman's feature film *'Paperback Hero'*. You'll find the iconic Boomerangs from the film's **Boomerang Café** still in town painted in strong vivid hues, making it hard to miss.

While in Nindigully, take a leisurely stroll along **The Gully Walk**, where interpretive signs reveal fascinating insights into the local history and native wildlife. For fishing enthusiasts, **the Moonie River** provides a perfect spot to cast a line and enjoy the peaceful surroundings.

No trip to Nindigully is complete without taking on one of the legendary burgers. Renowned for their colossal size and incredible flavor, these burgers are as well-known as the pub itself. **The Roadtrain Burger**, a true behemoth on the menu, is ideal for sharing or challenging your hunger!

9 people call  
Nindigully home



## EXPLORE

# Thallon

As you drive along the Carnarvon Highway, you'll spot Thallon long before you arrive – thanks to the eye-catching **Thallon GrainCorp Silo Murals** that mark your approach. Located just 70 km from St George, this friendly town is gaining fame for its artistic flair, with vibrant silos and rustic sculptures dotted throughout the town and won two Grey Nomad Awards in 2023.

Be sure to visit Thallon's town park, where you'll find '**William the Wombat**', a two-metre-tall sculpture of a Northern Hairy-nosed Wombat. This critically endangered species has a special connection to Thallon, as some of the earliest specimens were found in the area.

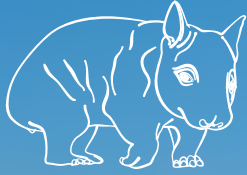
At the heart of the community is the historic **Francis Hotel**, serving locals and visitors alike since 1911. With its Outback charm, great food, and cold beers, it's the perfect spot to relax.

Don't miss the hotel's water tanks, which feature a tribute to the Northern Hairy-nosed Wombat, created by the same artists behind the silo murals.

Explore more of Thallon's artistic side by discovering the town's murals and sculptures, crafted by various talented artists. For history buffs, the **Old Bullamon Homestead** offers fascinating tours that transport you back to the region's early days or pick up one of the self-guided History Trails Brochures to delve into Thallon's early European history.

Stop by the **Thallon Information Station** to immerse yourself in the town's rich history and discover its unique local charm. Browse a selection of locally made products and fresh produce, pick up one-of-a-kind souvenirs, and gain valuable insights from the friendly staff.

### Fun Fact:



Thallon was originally called Bullamon, from a local Indigenous word, and renamed after JF Thallon, the Commissioner of Railways who helped route the railway through the area.



The district of Thallon has a population of **231** people (with about **60** residents in the town itself)



# EXPLORE

705 people  
proudly call  
Mungindi home



# Mungindi

Mungindi is renowned for its unique location, straddling the New South Wales and Queensland border, and for its historic **One Ton Post** – a survey peg placed over a century ago by JB Cameron, marking the official division between the two states.

One of Mungindi's standout attractions is the award-winning **Sculpture Trail**, created by talented local artist Nicko McMillan. This fascinating trail, which earned a Gold Grey Nomads Award in 2023, features rustic sculptures. It's a perfect way to experience the creative spirit of the town while soaking up its surroundings.

Mungindi offers a peaceful and authentic country experience, whether you're enjoying a chat with friendly locals at the cafés or pub, or unwinding in the town's soothing **thermal pools**, known for their therapeutic benefits.

Nature lovers will enjoy the **Barwon River**, a tranquil spot for fishing, putting the boat in, picnicking, or simply taking in the serene landscape. The town also celebrates its agricultural roots with events that highlight the rich farming traditions of the region.



## Fun Fact:

Straddling the Barwon River, this quirky town has a police station on each side of the border and runs on two time zones during daylight saving.



# History & Heritage

*The St George Region is rich with history and heritage, offering countless ways to connect with the stories of the past.*

For tens of thousands of years, the Kamilaroi, Gamilaraay, Gunggari, Mandandanji, Kooma, Bigambul, and Euahlayi peoples have lived in harmony with the land and waterways. Their sacred sites, cultural traditions, and enduring connection to Country are integral to our region's identity.

As European settlers arrived in the mid-19th century, agriculture became the backbone of the St George Region. Over time, the fertile soils and abundant waterways gave rise to

thriving industries, from cotton to wool, grains, and horticulture including carrots, onions, garlic, table grapes, and wine. Today, agriculture remains the lifeblood of the community, sustaining livelihoods and connecting locals and visitors alike to the land.

Explore our region's rich past and vibrant present through our region's trails and historical sites. At every turn, you'll uncover stories that bring the St George Region's history and heritage to life.

## Explore more

- Bush Tucker Garden, St George
- The Harmony Centre, St George
- Amoy Shepherds Memorial, St George
- Aboriginal Rock Wells, St George
- The Gully River Walk, Nindigully
- The Thallon History Trails, Thallon
- Old Bullamon Homestead, Thallon
- Hebel Historical Circle, Hebel
- Bollon Heritage Centre, Bollon
- Nullawokka First Nations Art Gallery & Tours, Bollon



# Top 5 to See & Do



## Pub Trail

Explore the charm of historic pubs along the Pub Trail



## St George Heritage Trail

Take a trip down memory lane, all at your own pace with the St George Heritage Trail



## Rail & River Precinct

Stretch your legs and view the history behind the Rail & River Precinct



## Cotton Trail

Learn about the region's agricultural legacy on one of our Cotton Trails



## One Ton Post

Mungindi's One Ton Post is the original survey peg placed by JB Cameron in 1881



## Nullawokka First Nations Gallery & Tours

On Guwamu/Kooma Country

Call in to Bollon's historic post office building to browse our carefully curated range of authentic Indigenous art, yidikis (didgeridoos) and unique Australian made gifts.

Or, if you are interested in learning more about Guwamu/Kooma First Nations culture join us for a unique experience.

Options include:

- Guwamu/Kooma Traditional Sites (Personalised 4WD Tour)
- Bollon Cultural Walk
- Guwamu/Kooma Mintha-Mintha Starry Skies (Overnight Wellness Camping)
- Sunset on the Claypan

39 Main Street, Bollon  
P 0413 062 068  
E nullawokka@outlook.com  
nullawokka.com.au



Photo courtesy of Shutter Charm by Louisa Everett

## Bollon Heritage Centre

A Journey Through Time

Discover the rich history of Bollon at the Bollon Heritage Centre. This treasured facility is community owned and volunteer operated. The Heritage Centre offers a fascinating glimpse into the past, showcasing the region's unique heritage.

- Immerse yourself in the stories of early pioneers and settlers who shaped the region.
- Uncover the tales of everyday life in Bollon, from agriculture, medical, schooling, to social gatherings and community events.
- Gold Coin entry, all funds go back to supporting the centre.
- Open Tourism Season March-November.
- Unleash your inner historian and explore Bollon's vibrant past

Main Street, Bollon  
E bollonheritage@gmail.com  
facebook.com/groups/BollonNoticeBoard



## Blenheim Backpacker Hostel

Clean, quiet and friendly environment

- Two comfortable kitchens with utensils provided
- Clean and safe water
- Free Wi-Fi
- Linen provided

145 Commissioners Point Rd, St George  
 P 07 4625 1538 or 0447 812 200  
 E nicolas.antoniou@bigpond.com  
<https://blenheim-backpackers-hostel.business.site>



## Dirranbandi Motor Inn

Friendly Service & Country Hospitality

- Spacious rooms
- Competitive rates
- King, queen, twin & family rooms available
- 18 ground floor units
- Split system reverse cycle air conditioners to all rooms
- Free WiFi
- Breakfast available daily
- Dinner available Monday – Thursday
- Easy access off the main street with off street undercover parking
- Guest Laundry available
- Disabled unit

13 Railway St, Dirranbandi  
 P 07 4620 7000  
 E dirranbandimotorinn@bigpond.com  
[dirranbandimotorinn.com.au](http://dirranbandimotorinn.com.au)

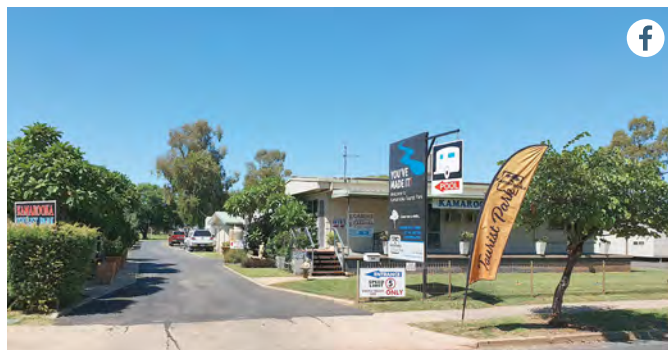


## Kapunda Riverfront Tourist Park

Kapunda Riverfront Tourist Park is located 10 kilometres from the town centre, set amongst 40 acres of natural bush on the beautiful Balonne River. It is a nature lover's paradise teeming with bird and animal life. Sit back, relax and watch the sun set as the kangaroos come in to laze in the shade and enjoy their evening feed. **New Owners!**

- Absolute riverfront powered and unpowered sites
- Low cost camping with pets permitted (on leash)
- Motorhome/caravan and camping/tent sites
- All sites with individual fireplaces
- Canoe and paddle board hire, plus 'guests only' boat ramp
- Firewood, ice, bait and fishing accessories available
- Clean amenities and coin operated washing machine/dryer
- All weather access roads throughout the park

12747 Carnarvon Highway, St George  
 P 0408 183 134  
 E info@kapunda.com.au



## Kamarooka Tourist Park

Clean • Quiet • Friendly

- 2 blocks to the town centre & 1 block to the riverside walk
- Barista coffee, iced coffee, milk shakes etc all year
- Happy Hour (on season)
- Modern fully self-contained family cabins
- Fully self-contained rustic log studio cabins
- Large, clean, modern amenities
- Fully equipped camp kitchen and free electric barbecues
- Free Wifi
- Drive through sites
- K9000 Dog Wash on site
- Grassed shady sites, some with annex slabs
- Heated therapeutic pool (seasonal)
- Gas refills and party/block ice onsite

56 Victoria St, St George  
 P 07 4625 3120  
 E info@kamarookatouristpark.com.au  
[kamarookatouristpark.com.au](http://kamarookatouristpark.com.au)



## Francis Hotel

The Francis Hotel, Thallon is so much more than just a pub

Have a cold drink in the bar, grab a barista coffee or a delicious meal in the dining room, chill out in our beer garden, buy essentials at the general store or take a break in our budget, airconditioned accommodation.

Thallon may be small, but we are mighty. We have an award-winning pub, award-winning silo art and have just won the Best Grey Nomad Friendly Town in Australia. And that's just the beginning.

- Meals 7 Days
- Large Groups & Coaches welcome by prior arrangement
- Open 8am til late
- Pet friendly Beer Garden
- Eat and Drink where the Locals Do!

16 Pine Street, Thallon  
 P 07 4625 9188  
 E thallonpub@bigpond.com  
 thallonpub.com.au

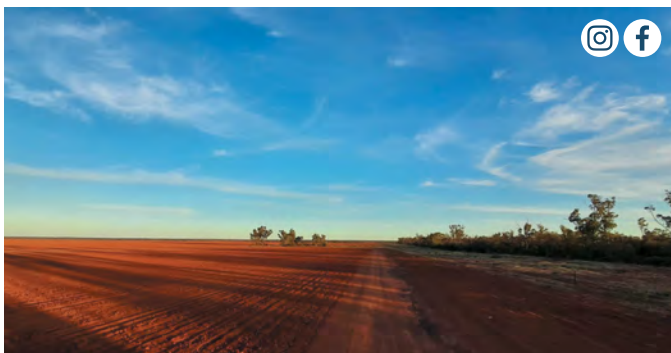


## Jacaranda Country Motel

Set amidst beautiful landscaped gardens on the Carnarvon Highway

- 18 x Disabled, King, Queen & Family units
- Quality pillow top mattresses
- Ground floor units
- Undercover parking & off street parking
- Continental breakfast available daily
- Free Wifi
- Saltwater pool, gazebo & BBQ area
- Microwave
- RC air con
- Guest laundry

78-80 Grey St, St George  
 P 07 4625 1011 M 0474 251 012  
 E info@jacarandacountrymotel.com.au  
 jacarandacountrymotel.com.au



## Lanarium Retreat

A Luxury Outback Farmstay

Located in the heart of Southern Queensland's agricultural belt near Thallon, an easy half-day drive from Brisbane.

Your destination will be our families' 7200ac working cattle farm 'Shirbar' where we raise beef cattle on the rich ochre red soils. The undulating nature of the country makes it the perfect location for sunsets, sunrises and stargazing with vast clear night skies. We are passionate about providing a memorable break for our guests, focusing on personal service, one-of-a-kind experiences and authentic paddock to plate cuisine.

We look forward to welcoming you to our place, Lanarium Retreat – Experience Unique.

'Shirbar', 509 Mulgar Rd, Thallon  
 P 07 4620 7020 or 0429 207020  
 E info@lanariumretreat.com.au  
 lanariumretreat.com.au



## Merino Motor Inn & Licensed Restaurant

Affordable & Comfortable Motel Accommodation  
 in the heart of St George

We are the closest motel to the town centre and have a range of accommodation to suit all our guests' needs. From the holidaying family, corporate traveller, or those just passing through, we've got you covered. For a list of all amenities please visit our website. Our facilities and rooms include:

- Large screen televisions
- Fridge, microwave, kettle & toaster
- Tea, coffee, milk & bottled water
- Guest laundry
- Air-conditioning
- High speed internet
- Pool

Our Restaurant is the perfect destination to drink, dine and celebrate any occasion.

78 Victoria St, St George  
 P 07 4625 3333  
 E bookings@merinomotorinn.com.au  
 merinomotorinn.com.au





## Pelican Rest Tourist Park

Our oasis on the Edge of the Outback - NO RIG TOO BIG

Perfectly located, Pelican Rest is 1.3km north of town on the Roma Road with 8 acres of spacious parkland with trees and huge grassy sites.

- 12m heated swimming pool
- Pet friendly sites and cabins available
- Excellent town drinking water
- Modern, fully self-contained cabins
- Air conditioned
- Clean amenities
- Disabled facilities
- Laundry
- Camp Kitchen and BBQ
- Pizza oven and wood carousel fire
- Dump point
- Free WI-FI

12022 Carnarvon Hwy, St George  
 P 07 4625 3398  
 E info@pelicanrest.com.au  
 pelicanrest.com.au



## River Gum Tourist Park

Your Gateway to Adventure and Relaxation

- Situated 100m from the Balonne River
- Ensuite cabins
- Grass drive thru sites
- Grass tent/camp sites
- Powered and unpowered sites
- FREE WI-FI
- Clean amenities
- Laundry facilities
- Camp kitchen with FREE gas BBQ
- Clean, quiet and friendly
- Pet friendly (powered/unpowered sites only)

221 Victoria St, St George  
 P 07 4625 5778  
 E admin@rivergumtouristpark.com.au  
 rivergumtouristpark.com.au



## Riverland Motor Inn

Finding an ideal family-friendly motel in St George does not have to be difficult. Welcome to Riverland Motor Inn, a nice option for travellers like you.

The spacious, quiet rooms offer split system air conditioners, microwaves, refrigerators, plus super fast WiFi access.

In addition to our award winning River's Restaurant (open Monday to Saturday from 5pm - 9pm), Room Service is available Monday to Saturday.

Guests arriving by vehicle have access to free parking.

72 Victoria St, St George  
 P 1800 001 899  
 E info@riverlandmotorinn.com.au  
 riverlandmotorinn.com.au



## Thallon Information Station

Your go-to for travel info, local crafts and produce

Conveniently located at McGeever Recreational Campgrounds, the Thallon Information Station offers a perfect view of Thallon's most iconic landmark - the breathtaking GrainCorp Silos mural. Inside, you'll find a treasure trove of travel information, brochures and intriguing local history. We proudly feature Thallon merchandise alongside local crafts and produce. Whether you need directions or just a friendly chat, stop by and experience the warmth of our community!

- Opening Days & Hours: March - Sept (Winter, Tourism Season); Every Fri, Sat, Sun and Mon 1pm - 4pm each day. Hours may vary and we can open upon request.

McGeever Recreational Grounds,  
 William Road, Thallon  
 E tourismthallon@gmail.com  
 explorethallon.com.au





# GOLDERS

— ESTABLISHED 1927 —

*Akubra*

*Mary G*



**ARIAT.**

**CROWBAR**

ORDER ONLINE NOW  
for all your country essentials

| 109 Victoria St, St George | 07 4625 3323 | [goldersaustralia.com.au](http://goldersaustralia.com.au)



THE AUSTRALIAN  
HOTEL

## DINE WITH US

LUNCH FROM 12-2PM | DINNER FROM 6-9PM  
BREAKFAST 7-10AM EVERY WEEKEND

## COURTESY BUS

AVAILABLE 7 DAYS A WEEK  
CALL (07) 4625 5000 TO BOOK

## WHAT'S ON

WEDNESDAY MUSICAL BINGO FROM 7PM  
THURSDAY TRIVIA FROM 7PM  
SATURDAY JAG THE JOCKEY FROM 2PM

## BOTTLE SHOP

WEEKLY SPECIALS  
DISCOVER YOUR PERFECT POUR!

(07) 4625 5000

[AUSTRALIANHOTELSTGEORGE.COM.AU](http://AUSTRALIANHOTELSTGEORGE.COM.AU)





## The Unique Egg

Carved Illuminated Emu Eggs

The Unique Egg, located at The Balonne Sports Store, is where you will find the humble emu egg carved into a stunning, illuminated piece of art.

Local character and artisan Steve ('Stavros') Margaritis has hand carved an amazing variety of patterns and scenes on each egg and illuminated them. This is the world's only display of hand carved, illuminated emu eggs, which have been gifted as far as the White House!

Open Monday - Friday 9.00am to 12 noon | 1.00pm to 4.30pm Saturday 9.00am to 12 noon.

108 Victoria St, St George  
 P 07 4625 3490  
 E panoreadave@hotmail.com  
 FB: The Unique Egg



## The Linen Cupboard

The bush department store

Discover the country charm of The Linen Cupboard in Dirranbandi, established in 2011. With a delightful selection of Australian-made ugg boots, scarves, jewellery, clothing and more, stop by for a chat and find the perfect keepsake!  
 Opening hours: Tuesday to Friday, 9am to 4pm

P 0438 402 478 ■ 34 Railway Street, Dirranbandi  
 info@thelinencupboard.com.au [thelinencupboard.com.au](http://thelinencupboard.com.au)



## Connect South West Qld

Connecting and Promoting



An Online information hub for Locals, Visitors, Community and Businesses of the Region.

- Online Business Directory
- Events Calendar
- Employment Listings
- Info Hub

[facebook.com/ConnectSouthWestQLD](https://facebook.com/ConnectSouthWestQLD)  
[connectsouthwest.com.au](http://connectsouthwest.com.au)



## St George Foodworks

Locally Owned and Operated

OPEN Mon, Tue, Wed, Fri 8am - 6.30pm; Thur 8am - 7pm;  
 Sat 8am - 5pm; Sun 9am - 1pm.

- Fresh fruit & veg
- Quality meats
- Full-service deli
- Magazines and stationery
- Golden Casket Lotto & Scratch-Its
- Home delivery available
- Shop online at [stgeorgefoodworks.com.au](http://stgeorgefoodworks.com.au)

88 Victoria St, St George  
 P 07 4625 3404  
[stgeorgefoodworks.com.au](http://stgeorgefoodworks.com.au)



GO LOCAL  
That's Betta!

VISIT BALONNE BETTA

FOR ELECTRICAL, IT, FURNITURE,  
BEDDING, MOBILE PHONES &  
UHF RADIOS



BRETT & LIZ  
BALONNE BETTA



Betta Brands. Betta Deals. Betta Service.

Balonne

Betta

FURNITURE  
ZONE

21 Henry Street, ST GEORGE  
 Ph: (07) 4625 5249  
[www.betta.com.au](http://www.betta.com.au)  
[balonne@my.betta.com.au](mailto:balonne@my.betta.com.au)

*Allow Sandytown River Cruises to showcase to you  
St George's financial engine - the beautiful Balonne River!*

*A small but very important part of SW Queensland's inland river system.*



*For further information and to book a cruise please visit [www.sandytownrivercruises.com](http://www.sandytownrivercruises.com)*



P 02 6753 2051 ■ 355 Carnarvon Highway, Mungindi  
tmh.mungindi@hotmail.com

*The Two Mile Hotel*

On the northern outskirts of Mungindi, the iconic Two Mile Hotel offers counter meals, pool table and tunes in a true pub setting. Check out the lacquered timber bar with charred shrapnel, remnants of a 2009 fire.

Established in 1908, the '2 Mile' also provides motel rooms and budget accommodation.



*Dirranbandi Outback Tours*

*An in-depth insight into the unique gravity diversion infrastructure of 'Cubbie' as it is affectionately known by locals.*

Originally developed by the mastermind Des Stevenson and meticulously maintained to ensure the former sheep and cattle stations are both environmentally and economically sustainable.

In approximately 3 hours we cover more than 100 kms, highlighting cropping areas, water storage and transfer systems, the Culgoa allocation intake area, the floodways and natural woodland and the Cubbie Cotton Gin.

Tours depart from the DRCP, please arrive 10 minutes before departure time.

41-45 Kirby Street, Dirranbandi  
P 0447 555 685  
E [dirranbandicaravanpark@gmail.com](mailto:dirranbandicaravanpark@gmail.com)  
[dirranbandioutback.com.au/tours](http://dirranbandioutback.com.au/tours)



*Bollon Cafe*

*Your 'must stop' in Bollon*

Bec & Carly are an award-winning clever team of two friends, who share a history, a love of food, family and fun.

A must stop for excellent coffee, and amazing home-made eats and treats, on your way to anywhere!

P 0439 256 418 ■ Main Street, Bollon  
[bolloncafe@gmail.com](mailto:bolloncafe@gmail.com) [bolloncafe.com.au](http://bolloncafe.com.au)



**ST GEORGE REGION EXPLORE CENTRE**

114 St George's Terrace, St George

07 4620 8877

[vic@balonne.qld.gov.au](mailto:vic@balonne.qld.gov.au)

[stgeorgeregion.com.au](http://stgeorgeregion.com.au)

Printed 2025